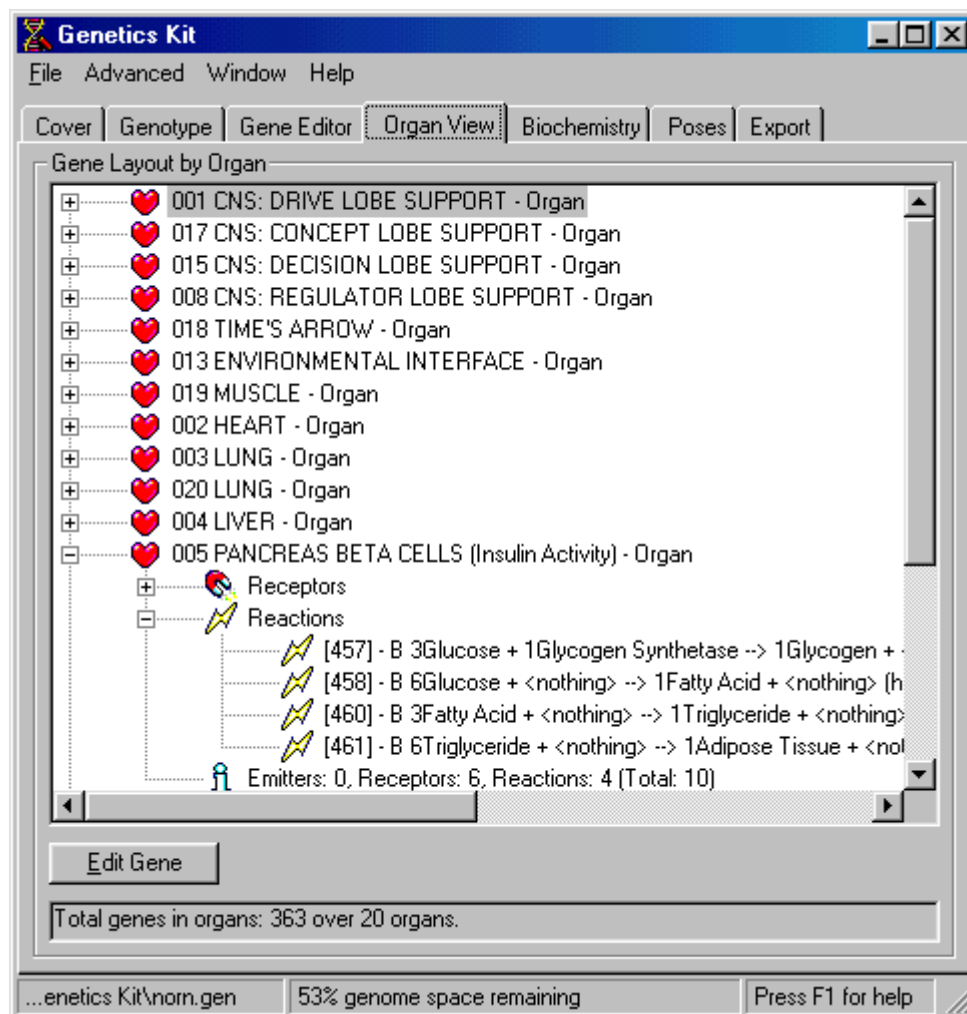


Organ View

The organ view window shows all the organs in the genome, and allows the display of individual genes (Receptors, Emitters and Reactions) by organ.



Organ display and editor page. This displays all the genes that are found in Organs (receptors, emitters and reactions) inside the appropriate organ. Genes can be edited from this page in three ways:

- By double-clicking on a gene.
- By selecting a gene and clicking on the **Edit Gene** button.